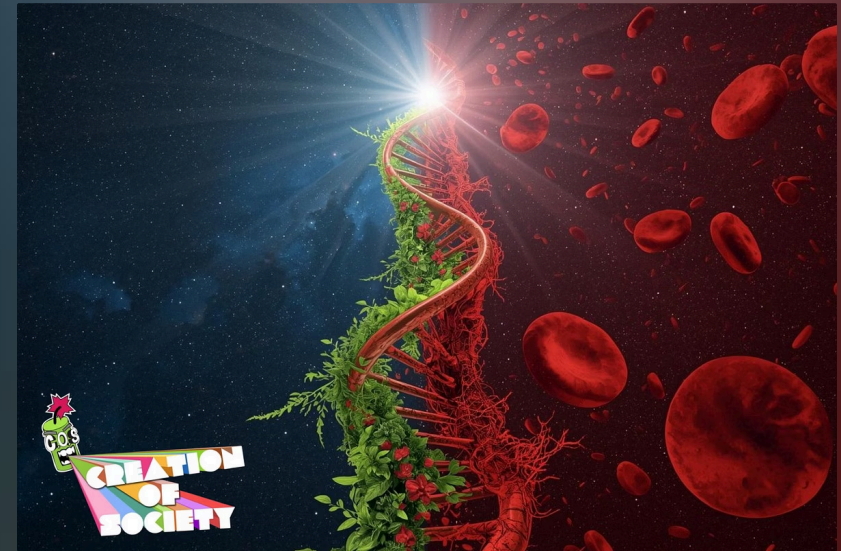


Creation of Society

Reframing agency, information, and biological asset management in the sickle cell ecosystem. This presentation explores how strategic intervention can fundamentally reshape power dynamics and outcomes in public health.



A System Designed Without the Community

The Core Inequity

The sickle cell community bears the biological burden of disease—the daily pain, the medical complexity, the lived experience of a chronic condition. Yet power, resources, and narrative control remain firmly in the hands of external institutions.

Community Holds

Biological burden

Lived experience

Daily management

Institutions Hold

Jurisdiction

Funding streams

Narrative control

This misalignment creates a stable but harmful equilibrium where community agency remains systematically low. The very people most affected by sickle cell disease have the least control over research priorities, treatment approaches, and health narratives. This isn't an accident—it's a structural feature that persists because it serves institutional interests.

Four Strategic Actors



Community (A)

Seeks relief from symptoms, stability in daily life, and meaningful agency over their health outcomes and biological futures.



Medical-Industrial System (B)

Seeks intellectual property development, revenue generation, and control over disease narratives and treatment paradigms.



Advocacy Organizations (D)

Seek funding sustainability, institutional legitimacy, and influence within the existing public health infrastructure.

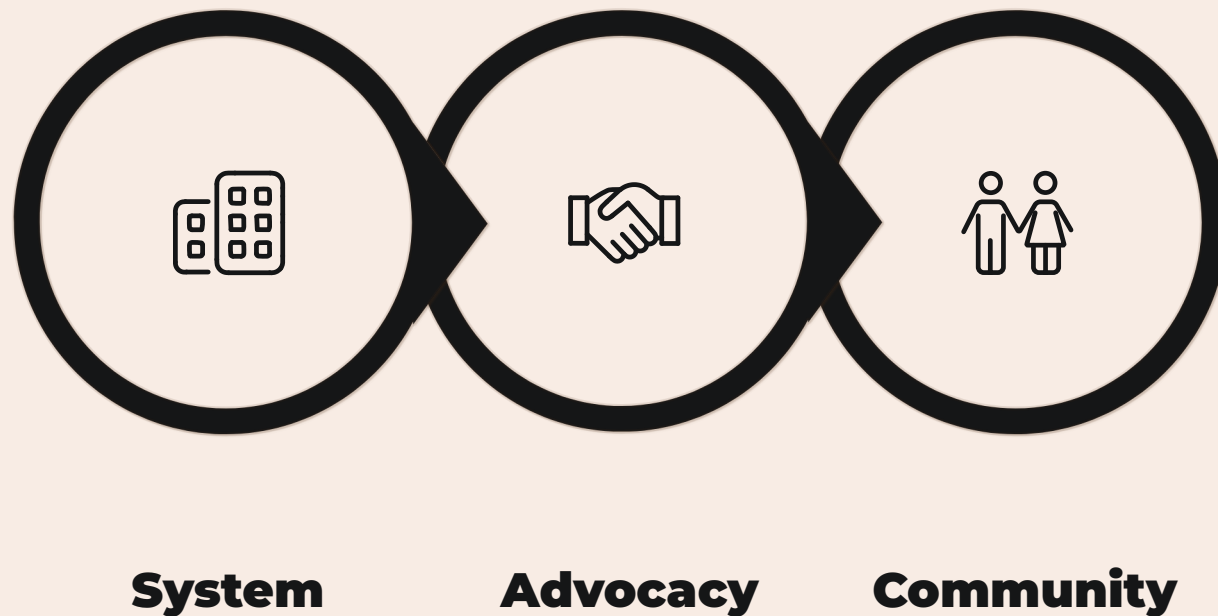


Creation of Society (C_o)

Introduces new information frameworks, removes structural barriers, and creates alternative pathways for community agency.

The Current Game: A Stackelberg Model With One Dominant Player

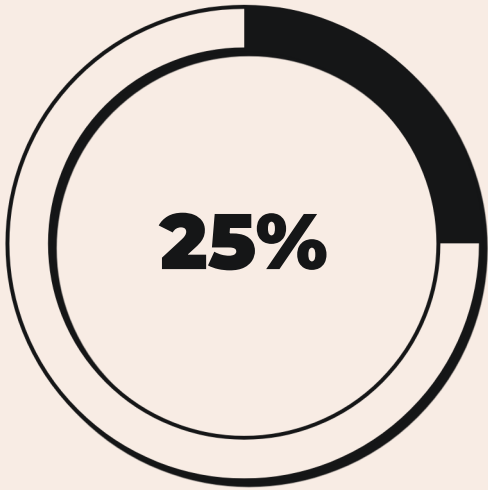
The existing sickle cell ecosystem operates as a sequential game where power determines the order of play. Understanding this structure reveals why change has been so difficult to achieve.



In this hierarchical game structure, the Medical-Industrial System moves first, establishing a genetic-deterministic narrative that emphasizes pharmaceutical intervention. Advocacy organizations follow, aligning their programs and messaging with available funding streams. The community moves last, responding to a constrained set of options that weren't designed with their input. This sequential structure produces a predictable low-agency equilibrium that persists despite widespread dissatisfaction.

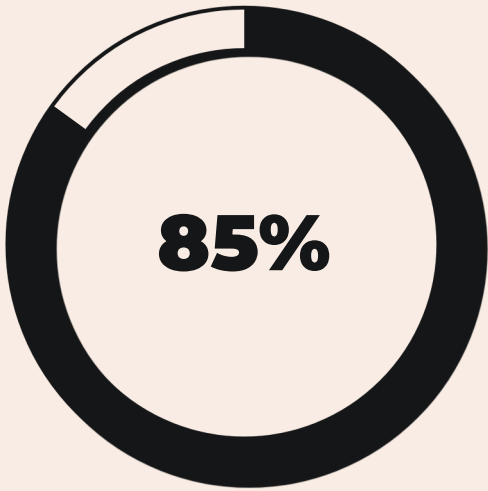
The Status Quo Equilibrium

(A: Low Agency, B: Genetic Dominance, D: System Alignment)



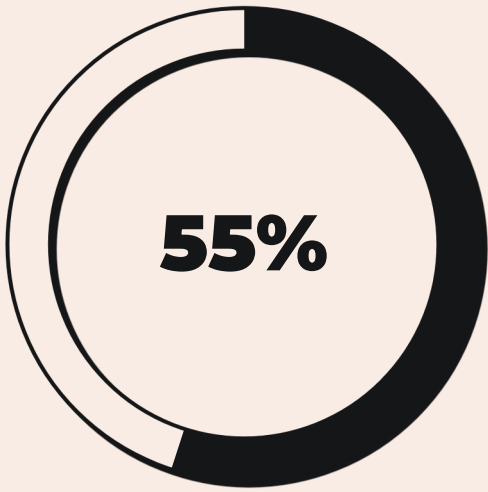
Community Payoff

Low agency, limited options



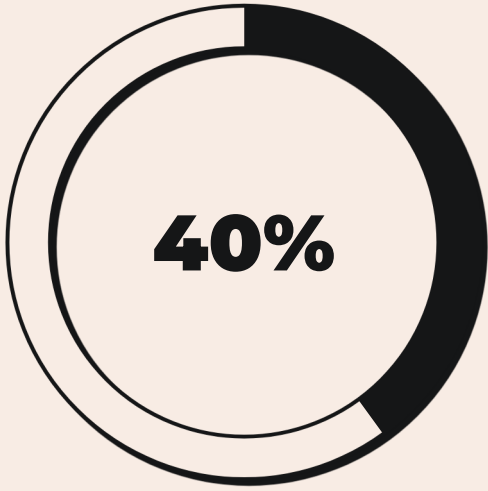
System Payoff

High control, revenue stable



Advocacy Payoff

Moderate funding, alignment costs



Public Health Outcome

Suboptimal, inequitable

Why This Equilibrium Persists

This configuration remains stable because the community faces prohibitively high costs for pursuing alternative strategies. Information asymmetry keeps community members unaware of supportive options, while structural barriers make high-agency behaviors economically and socially costly.

The system has no incentive to change—it captures value while externalizing risk. Advocacy organizations depend on system alignment for funding. Only the community bears the full cost of this arrangement, but lacks the resources to disrupt it.



The Disruption: Creation of Society Enters the Game



Information Shift

Counter-narratives emphasizing community agency, supportive nutritional practices, and biological asset management replace genetic determinism.



Cost Reduction

Free moringa health packages dramatically lower the barrier to thiocyanate-supportive behavior, making high-agency choices economically rational.

These two simultaneous interventions don't just add a new player to the existing game—they fundamentally alter the game's structure. By changing both the information environment and the cost structure, Creation of Society makes previously irrational strategies suddenly viable. This is mechanism design at work: reshaping incentives and constraints to enable new equilibria.

Changing the Game ≠ Competing in the Game



Creation of Society doesn't compete within the existing framework—it creates an entirely new strategic landscape. This distinction is crucial for understanding its disruptive potential.



Introduces New Strategic Options

Previously unavailable choices become accessible to community members



Reduces Cost of High-Agency Behavior

Economic and social barriers to empowered action are systematically lowered



Reframes Thiocyanate as a Community Asset

Shifts from genetic liability to manageable biological resource



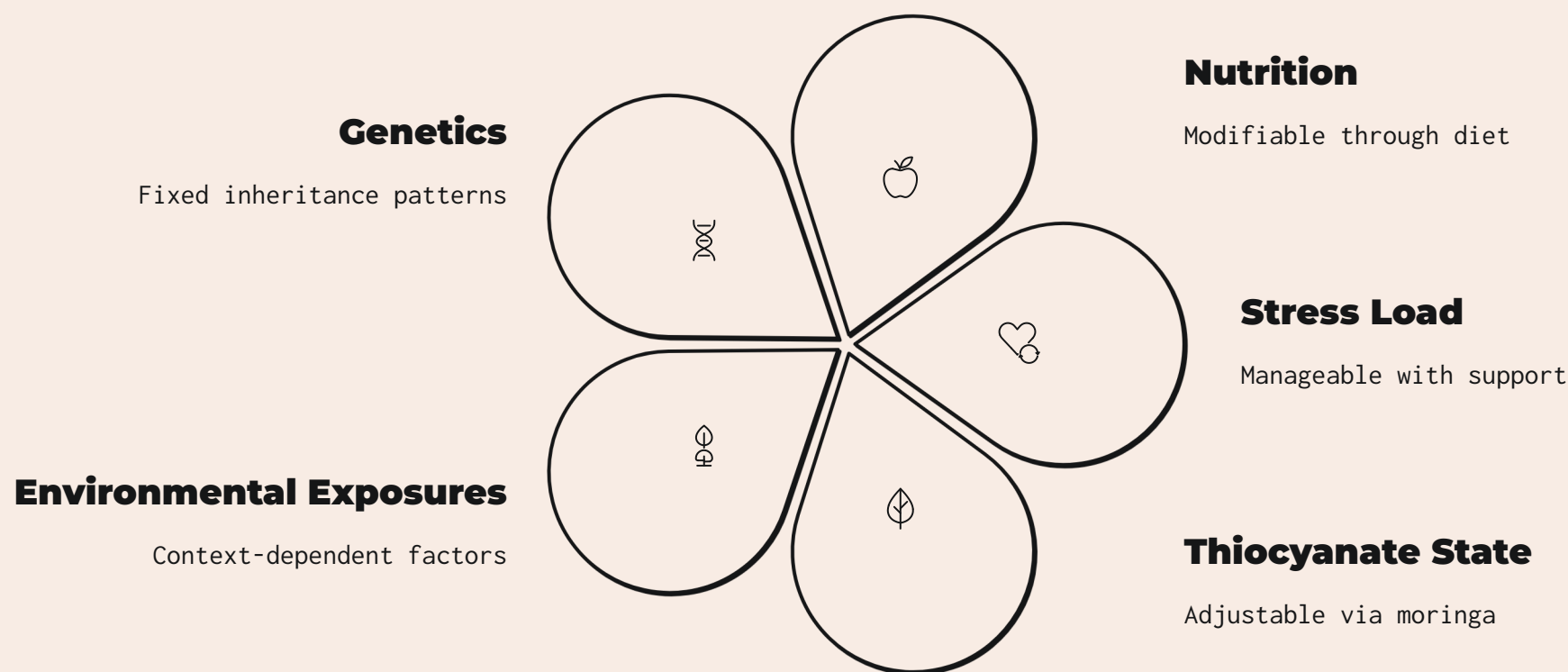
Creates New Information Environment

Alternative narratives gain legitimacy and reach

This is mechanism design, not advocacy. We're engineering a new equilibrium by changing the underlying game structure.

Biological Asset Management: A New Paradigm for Community Agency

Every community member holds a complex biological asset vector that extends far beyond simple genetic determinism. This multidimensional framework empowers individuals to manage their health through multiple pathways.



- Creation of Society enables low-cost modification of the thiocyanate dimension while supporting community-owned data generation. This transforms the conceptual frame from "biological liability" to **biological agency**—a shift with profound implications for self-efficacy and health outcomes.

The New Strategy Set for the Community

High-Agency Behavior Becomes Rational



This fundamental shift in payoff structure changes the community's dominant strategy. What was previously an irrational choice—pursuing agency despite high costs and limited support—becomes the economically and socially optimal path. When rational self-interest aligns with empowerment, sustainable behavior change becomes possible at scale.

The elegance of this intervention lies in its simplicity: by removing two key barriers (cost and information), we flip the strategic calculus entirely.

The New Equilibrium

(A: High Agency, B: Genetic Dominance, D: Community Alignment, C_o: Active)

75%

Community
Payoff

Medium-high agency with
sustainable support
structures

70%

Advocacy Payoff

Higher legitimacy from
authentic community
alignment

60%

System Payoff

Moderate control with
pressure to adapt
approaches

80%

Public Health
Outcome

Significantly improved
equity and effectiveness

This new equilibrium represents a Pareto improvement for the community and advocacy sectors, with neutral to positive effects on system outcomes. Over time, competitive pressure may push the medical-industrial system toward more holistic, community-centered approaches as the old model loses legitimacy.



A Repeated Game With Path-Changing Effects

The true power of this intervention emerges over time as adoption creates cascading effects throughout the ecosystem. Each iteration strengthens community position and weakens barriers to agency.



This is how a new equilibrium becomes stable—not through top-down mandate, but through the accumulated weight of individual rational choices that collectively reshape institutional incentives. The community gains jurisdiction over its own biological assets through demonstrated capability and organized action.

A High-Leverage Intervention



Creation of Society represents a fundamentally different investment thesis in sickle cell public health—one that changes structural dynamics rather than treating symptoms of systemic dysfunction.



Increases Agency at Scale

Reaches entire communities, not just individual participants



Reduces Structural Barriers

Removes cost and information obstacles systematically



Strengthens Community Ownership

Builds sustainable, self-reinforcing health behaviors



Creates Measurable Shifts

Tracks behavior change and narrative evolution with data



Low Marginal Cost

Efficient per-participant economics enable rapid scaling

❏ This is **public health ROI** with structural impact. Funders aren't just supporting a program—they're enabling a mechanism that reshapes power dynamics and creates durable change in how the sickle cell ecosystem operates.

Why Partners Should Care: A Platform That Changes the Rules

Strategic partners gain access to a transformative platform that aligns institutional interests with community empowerment—a rare combination that creates sustainable value for all stakeholders.

Community-Centered Data Ecosystem

Access to authentic community insights and biological asset data generated through voluntary participation, not extraction. This data reflects real-world behavior change and community-validated outcomes.

Engagement Mechanism

A proven framework for increasing meaningful community engagement that transcends traditional transactional relationships. Partners connect with an activated, informed population.

Empowerment Narrative

Align with a compelling story of empowerment rather than dependency. This narrative resonates with funders, communities, and public stakeholders while driving authentic outcomes.

Scalable Model

A mechanism design approach applicable across chronic conditions and marginalized communities. The principles extend far beyond sickle cell disease.

A System Built With You, Not On You

Creation of Society represents a fundamental departure from traditional public health interventions. This is not another program designed by outsiders and imposed on the community—it's a mechanism that restores agency and reframes your biology as an asset you control.

01

Removes Barriers

Eliminates cost obstacles to thiocyanate-supportive practices through free moringa packages

02

Provides Tools

Delivers accessible knowledge and practical resources for biological asset management

03

Restores Agency

Returns control over health decisions and biological futures to community members

04

Reframes Biology

Shifts from genetic liability to manageable asset with multiple intervention points

05

Creates Shared Narrative

Builds collective story of control, possibility, and community strength

Your Voice Matters

This initiative succeeds only through authentic community participation and leadership. Your lived experience, your choices, and your collective power drive the transformation.

Creation of Society provides the mechanism. You provide the agency that makes it real.

Creation of Society Is Not a Program—It's a New Game

By simultaneously shifting information environments, lowering structural costs, and reframing biological assets, we engineer a new equilibrium where the community's rational strategic choice is **agency**, not resignation.



Mechanism Design

We don't compete in the old game—we change its structure



Sustainable Transformation

New equilibrium becomes self-reinforcing through rational choice



Community Jurisdiction

Biological assets managed by those who hold them

When we change the game's structure—when high-agency behavior becomes the rational choice—we create lasting transformation that no program or policy alone could achieve. This is public health reimaged through the lens of mechanism design and strategic disruption.

[Partner With Us](#)

[Learn More](#)

